

QUANTICO SHOOTING CLUB, INC. PISTOL MATCH BULLETIN

Post Office Box 212 Quantico, Virginia 22134-0212



NRA / CMP Pistol Bullseye 2009 Match Flyer

www.QuanticoShootingClub.com

QSCPistol@gmail.com

info@QuanticoShootingClub.com



Year 2009 NRA and CMP REGISTERED PISTOL TOURNAMENTS

Saturday-Sunday, May 9 -10 NRA 2700, State Service Pistol NRA 900, NRA Distinguished Revolver, Team, CMP EIC, and Pistol Competition Clinic. (Range available for practice on Friday May 8 subject to availability).

Saturday-Sunday June 20-21 Regional NRA 2700, NRA Distinguished Revolver, Team, CMP EIC, and Competition Pistol Clinic. (Range available for practice on Friday June 19 subject to availability).

STATE SERVICE PISTOL and MAY MATCH May 9-10

SATURDAY May 9 Check In – 0700 First Match - 0800	<ul style="list-style-type: none">• .22 CAL AND CENTER FIRE NRA IND MATCHES• LUNCH BREAK• FOLLOWING LUNCH, TEAM .22 AND CF MATCHES WILL BE CONDUCTED.• BRIAN ZINS AND THE MARINE PISTOL TEAM WILL CONDUCT A PISTOL CLINIC.
SUNDAY May 10 Check In – 0700 First Match - 0800	<ul style="list-style-type: none">• .45 NRA 900 IND PORTION OF 2700• TEAM .45 MATCH• STATE SERVICE PISTOL 900 IND COURSE• NRA DISTINGUISHED REVOLVER• CMP EXCELLENCE IN COMPETITION (Leg Match)

May 8, Comp Pistol Range will be used for practice (subject to availability)

REGIONAL MATCH June 20-21

SATURDAY June 20 Check In – 0630 First Match - 0800	<ul style="list-style-type: none">• .22 CAL AND CENTER FIRE IND MATCHES• LUNCH BREAK• .45 CAL NRA COURSE OF FIRE IND MATCH• THE MARINE PISTOL TEAM WILL CONDUCT A PISTOL CLINIC
SUNDAY June 21 Check In – 0630 First Match - 0800	<ul style="list-style-type: none">• NRA TEAM MATCH .22, CF AND .45• NRA DISTINGUISHED REVOLVER• CMP EXCELLENCE IN COMPETITION (Leg Match)

June 19, Comp Pistol Range will be used for practice (subject to availability) **Open To:** Anyone legally eligible to enter the competition (Note: See notice on Junior entry requirements at the end of this bulletin)*.

Information: Match Director Rick DeGraffenreid eMail: QSCPistol@gmail.com

NOTE: Limited on-base lodging is available to Military and Civilians. See End of Bulletin for details

Lunch: The availability of lunch for sale will be announced on the QSC web page by May 1 and June 10.

Rules: Current "NRA Conventional Pistol Rules" and "CMP Competition Rules" rulebooks will govern the conduct of these matches.

Safety and personal conduct is also governed by rules and regulations for Marine Corps Base Quantico. Access to Marine Corps Base Quantico requires Government issued identification.

Safety Notices: Alcoholic Beverages are Strictly Prohibited! Anyone believed to be under the influence of alcohol will not be allowed to compete.

The use of the Open Chamber Indicator flag is mandatory in accordance with NRA rules.

Eye and ear protection must be worn. The Covered area of the Competition Pistol Range requires DOUBLE hearing protection.

Special Instructions!!! MCB Quantico is a Federal / Military Facility. State Concealed Carry does not apply.

Only on-duty law enforcement may transport loaded weapons as outlined in [MCBQ Order 8000.1](http://www.quantico.usmc.mil/search.aspx?Value=8000.1&type=dir)
<http://www.quantico.usmc.mil/search.aspx?Value=8000.1&type=dir> summary in the table below

Transport of Firearms and Ammunition Aboard Marine Corps Base, Quantico

Marine Corps Base, Quantico (MCBQ) is a U.S. Military Installation and Federal law applies. Like all military installations, MCBQ takes force protection seriously and all personnel are subject to their rules and regulations. The Marines are very professional and do not interfere with those who follow the rules. Firearms Transport rules are found in [MCBQ Order 8000.1](http://www.quantico.usmc.mil/search.aspx?Value=8000.1&type=dir) and the Provost Marshall Standard Operating Procedure. This authority requires that all Competition Shooters ensure that:

- All firearms are CASED and UNLOADED
- A cased firearm must not be readily accessible in the vehicle
- Ammo must be as far away from a cased firearm as possible; ammo should be cased, if practicable, and not readily accessible --
- All magazines must be unloaded

Classification: The NRA classification system will be used in all NRA matches. Individuals who have not been classified will fire in the Master Class. (Rule 19.6 Assigned Classification may be used.)

INDIVIDUAL MATCH ENTRIES - Entries in all individual matches will be made by using the current NRA SR-1 Registration and Entry Card. Complete all applicable blanks on the front of the entry card, top and bottom, including name, address, city, state, zip, category and classification. All competitors will be required to sign a hold harmless agreement prior to the start of the match. Mail your entry with the correct fees to the address posted at the top of this program. *ENTRIES WILL NOT BE TAKEN OVER THE TELEPHONE.* All entries received will be squadded the Tuesday before the match. High Masters will be squadded first, followed by Masters and so on. Unclassified shooters will compete in the Master class. *Special squadding request will be considered.* Entries received before the match without the entry fee for advanced registration, will not be squadded in advance and not guaranteed an opportunity to compete. Squadding and score cards will be picked up no later than 0700 the day of the match at the Quantico Shooting Club Inc. clubhouse. Individual NRA Numbers must be used to insure proper point credit. Competitors who are not members of NRA must provide their classification or they will be squadded in the Master Class.

Team Matches - Entries in all team matches will be made by using the team entry card, available at the stat office. Entries for team matches must be turned in to the center of the line no later than thirty (30) minutes after the completion of the Center Fire Individual portion of the 2700 (Saturday May 9) and/or after the .45 Individual course of fire (Saturday Jun 19). Entries for Sunday team matches must be paid in the stat office no later than 45 minutes after the individual match proceeding the team match is completed. Scratch Teams will be considered on a case by case basis on June 21.

SCORING: All competitors will be required to keep score for one another during individual matches. For team matches, each team must provide a scorekeeper for next team over (to right)

AWARDS: Awards for all matches will be given in each of two categories: Service and Civilian; Awards will be given to an open winner, and at least one per every five competitors. Team awards will follow the same guidelines. NRA points will be awarded for all matches, except the CMP "Leg" match, the NRA Distinguished Revolver and Service Pistol Matches. All NRA points will be mailed with a match bulletin. Awards for the "Leg" match are "points" to be applied towards the CMP "Distinguished Pistol" Title and will be forwarded IAW CMP rules to the CMP or (in the case of service members) to that service EIC Coordinator. The NRA DR Match Top Shooters earn points towards "Distinguished Revolver" Award. The top scoring 10% of non-Distinguished shooters earn these points. **TIES:** All ties will be broken by the guidelines established in the current NRA Pistol rule book.. (**Regional Championship:** Winner - Gold Tone Regional Medallion; 2nd Place – Silver Tone Regional Medallion; 3rd Place Bronze Tone regional medallion; Winning Team and Place team)

CHALLENGES: A \$2.00 fee will be charged for each challenge. The challenge fee must be paid to the block official when making the challenge. If the score is corrected the challenge fee will be returned. The challenge period time frames will be according to NRA or CMP rules. It is the duty of the competitor to have appropriate change for challenges.

PISTOL MATCHES, TARGETS, AND DISTANCE Matches listed in this bulletin are fired on Official NRA Targets (see NRA Pistol Rules Book for descriptions). Slow Fire is shot at a distance of 50yds, with Time Fire and Rapid Fire being shot from a distance of 25yds. The following are courses of fire for matches fired at Quantic:

NRA 2700 Pistol Match .22 Caliber 900 Agg. Match:

- Stage 1: Slow Fire Match - Twice across - 50yds -10 shots -10 minutes time limit.(200 Agg.)
- Stage 2: NMC Match Slow Fire - 50yds - 10 shots - 10 minutes time limit, Time Fire -25yds - two strings of 5 rounds ea. with 20 seconds per string, Rapid Fire -25yds - two strings of 5 rounds each with 10 seconds per string.(300 Agg.)
- Stage 3: Time Fire Match - Twice across - 25yds - two strings of 5 rounds each with 20 seconds per string. (200 Agg.)
- Stage 4: Rapid Fire Match -Twice across * 25yds - two strings of 5 rounds each with 10 seconds per string. (200 Agg.)

Center Fire 900Agg. Match: (same course as .22 Caliber 900 Agg. Match)

.45 Caliber 900Agg. Match: (same course as .22 Caliber 900 Agg. Match, CMP Leg Match - National Match Course Service Pistol and Distinguished Revolver match) (see NMC Match under the .22 Caliber 900 Agg. Match for details.)

.22 Ind	RimFire Match
Match 1	20 Shots Slow Fire 50 Yards
Match 2	National Match Course 10 Shots Slow@ 50yd, 10 Shots Timed, 10 Rapid @ 25 yd
Match 3	20 Shots Timed Fire @ 25 yd
Match 4	20 Shots Rapid Fire @ 25 yd
CenterFire	Center Fire Match
Match 6	20 Shots Slow Fire 50 Yards
Match 7	National Match Course 10 Shots Slow@ 50yd, 10 Shots Timed, 10 Rapid @ 25 yd
Match 8	20 Shots Timed Fire @ 25 yd
Match 9	20 Shots Rapid Fire @ 25 yd
.45 Cal	.45 Cal match
Match 11	20 Shots Slow Fire 50 Yards
Match 12	National Match Course 10 Shots Slow@ 50yd, 10 Shots Timed, 10 Rapid @ 25 yd
Match 13	20 Shots Timed Fire @ 25 yd
Match 14	20 Shots Rapid Fire @ 25 yd
Match 5	Aggregate of matches 1 through 4
Match 10	Aggregate of matches 6 through 9
Match 15	Aggregate of matches 11 through 14
Match 16	Aggregate of matches 5,10, & 15 (Grand Aggregate)

CMP EIC and NRA DR matches will be fired concurrently at the State Service and Regional matches immediately after Team firing concludes. Two relays, or more if necessary, will be fired to ensure anyone who wants to shoot both matches will have the opportunity. Pistols, revolvers and ammunition will be inspected and triggers weighed prior to the EIC and DR matches. Both matches use the NMC course of fire.

Civilian Marksmanship Program Excellence In Competition (EIC) or Leg Match - *An entry card for Leg Matches to include the required notarized affidavit by CMP must be in the stat office no later than 0900 Sunday morning. Competitors will provide their own ammo. Competitors are reminded that in accordance with CMP rules, the number of EIC matches per year is limited and that edibility requirements and weapons rules must be followed. Triggers will be weighed on any service pistol truck after receiving your squadding and before moving down range. Squadding will be random and handed out near the center of line. For affidavit, see www.QuanticoShootingClub.com / www.odcmp.com web sites.*

NOTE: IT IS EACH COMPETITOR'S RESPONSIBILITY TO READ AND ADHERE TO THE MATCH BULLETIN AND POSTED CHANGES ON THE WWW.QUANTICOSHOOTINGCLUB.COM WEBSITE. THE MATCH DIRECTOR RESERVES THE RIGHT TO ALTER ANY FACET OF THE MATCH. ANY CHANGES WILL BE MADE IN ACCORDANCE WITH THE CURRENT NRA RULE BOOK AND WILL BE ANNOUNCED BY THE CENTER OF THE LINE

MATCH FEES:

May Matches and State Service Pistol

All: A \$9 NRA Registration fee Applies. Shooters do not need to be a member of the NRA to compete in NRA Matches.

NRA 2700 Aggregate Individual Matches (.22, CF, .45)

Individual Entry Fees: (1 Gun - \$25 / 2 Gun - \$30 / 3 Gun Regular - \$35)

NRA 2700 Juniors (\$15 / \$20 / \$25)

NRA Service Pistol 900 (for 3 Gun 2700 shooters = \$5) (Otherwise, Fee \$25 [Juniors \$15])**

***Proceeds from State Service Pistol go to the Virginia State Pistol Team for Nationals .*

NRA Team Match Fees : (1 Gun - \$25 / 2 Gun - \$30 / 3 Gun - \$35 / 4 Gun Regular - \$40)

NRA Juniors (\$15 / \$20 / \$25 / \$30)

NRA Distinguished Revolver \$15

CMP EIC (Leg) Match \$15

Clinic (Free, registered shooters have priority) All attendees must sign a hold harmless form.

June Regional Matches

All: A \$9 NRA Registration fee Applies. Shooters do not need to be a member of the NRA to compete in NRA Matches.

NRA 2700 Aggregate Individual Match (.22, CF, .45)

Individual Entry Fees: (1 Gun - \$35 / 2 Gun - \$40 / 3 Gun Regular - \$45)

NRA 2700 Juniors (\$20 / \$25 / \$30)

NRA Team Match Fees : 1 Gun - \$35 / 2 Gun - \$40 / 3 Gun - \$45 / 4 Gun Regular - \$50

NRA Juniors (1 Gun \$25 / \$30 / \$33 / 4 Gun \$40)

NRA Distinguished Revolver \$15

CMP EIC (Leg) Match \$15

Clinic (Free, registered shooters have priority) All attendees must sign a hold harmless form.

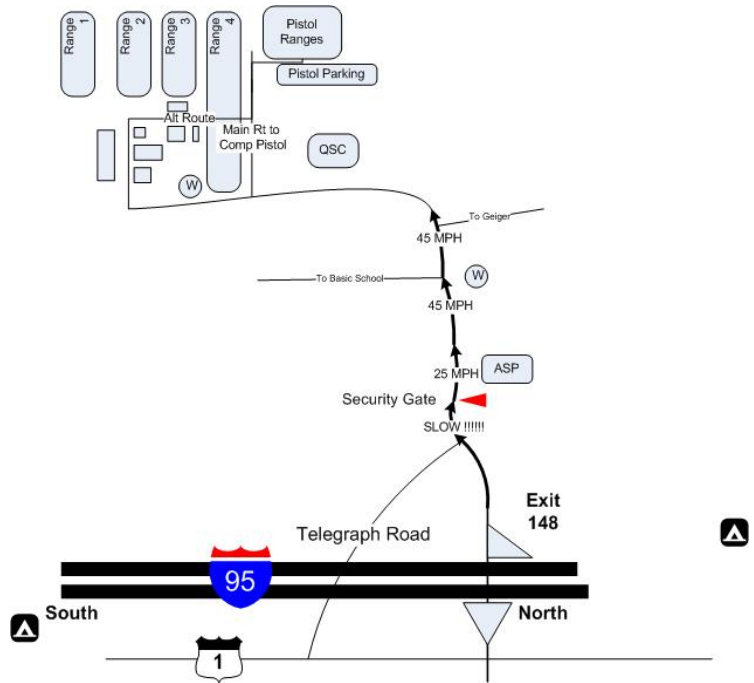
Guest and Range Fees are included in the Match Costs. USMC and other service Active, Reserve, National Guard, and retired should mark the proper category at the stat shack check-in to insure the proper fees get paid to MCB Quantico. (Civilians fall onto a different category for accounting purposes). Guest and other fees are the responsibility of the shooter if attending Friday Practice.

Open To: Anyone legally eligible to enter the competition*

* Juniors must be accompanied by a parent or guardian and an additional USMC MCB Quantico form signed.

General Notes: Beep features of timers must be disabled. No Competitor Cell Phones forward of the ready line. Hydrate and acclimatize. Quantico recommends bringing adequate sunscreen and insect repellent (especially for ticks).

Location: Directions to The Competition
Pistol Range Take Interstate 95 to Exit 148, go West (Russell Rd-Turns into MCB-1) Enter the gate (Government Issued ID Required (DL, or other Government photo ID) Observe all speed laws especially when passing Marine Formations / PT / Road Marches. Pass the ASP, the Fire Station. Bear left on MBC01 and pass the QSC Clubhouse. Depending on the open ranges, you may have to turn at Willis Rd or the next main right and turn back on Garand Rd. Notices will be posted at the QSC Clubhouse. Check-in will be at the clubhouse or at the range. (TBD). Go to www.quanticoshootingclub.com



Lodging: Base Transient Lodging is available to qualified individuals. RV Sites and campgrounds (commercial, on base, and in Prince William Forrest) are also very close to the range facilities. Hotel-Motel clusters include Holiday Inn near I-95 and 234 West, also accommodations at 234 and US-1, Ramada Inn at Triangle Va, and several accommodations on Garrisonville (RT 610) between the back gate and I-95.

A Block of rooms at the Marine Corps Base Quantico Crossroads Inn at 3018 Russell Rd, Quantico VA.

May Matches: Group Code 1525 / June Matches: Group Code 1526

Military/Gvt rate \$69 Reg / \$77 Efficiency / \$86 Suite (during summer, Military families have suite priority)
Civilian rate \$78 Reg / \$84 Efficiency / \$86 Suite (during summer, Military families have suite priority)
(703) 630-4444 (Take I-95 exit 148, go East, enter the main side (east of I-95) of base, Pass the Commissary and PX, continue through wooded area, CrossRoads Inn is on the right.

THE CROSSROADS INN

MCB Quantico, Virginia 22134
Building Number 3018
Phone: (703) 630-4444
Reservations: (800) 965-9511 or reservations@ciqva.com
Fax: (703) 630-4499